

## Finishes + Materials Care & Maintenance

V3 March 2024



---

# Living Finishes Care & Maintenance

Antique Brass Dark (ABD)

Antique Brass Medium (ABM)

Florentine Bronze Dark (FBD)

Florentine Bronze Medium (FBM)

Oiled Rubbed Bronze (ORB)

Polished Brass Unlacquered (PBU)

Satin Brass Unlacquered (SBU)

Weathered Brass Medium (WBM)

Designer Doorware's special finishes are fabricated and coloured by hand; variations in size, shape, and colour are a natural result of this process.

Tooling marks and surface scratches are part of the character of the finished pieces.

Designer Doorware products are offered in a glorious range of nine living finishes that add depth and warmth to every room. Created in multiple layers over natural brass, each finish acquires a beautiful tarnish that age with grace. As they are fabricated and coloured by hand; It is normal to see blotch marks and variation of tarnishing all over the surface as we do not apply any lacquer coatings and they will oxidize over time, however, they can be easily maintained with regular maintenance to provide years of timeless beauty. An occasional application of a pure, nonabrasive wax is helpful in preventing spotting buildup, and light buffing with a soft cloth will produce a high luster. Here are several ways for you to slow down the tarnishing process.

## For Unlacquered Polished or Satin Brass ONLY:

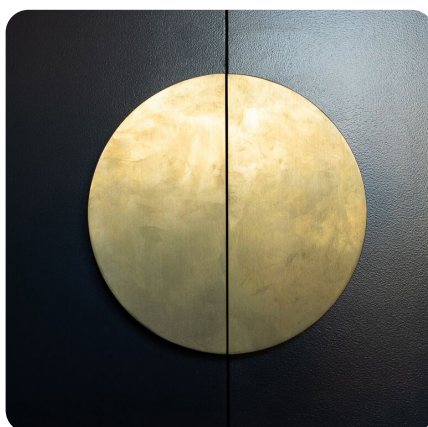
Brass will naturally tarnish or age quickly after little exposure to its environment, creating a beautiful brown or gray-green colour. Brass polishing compound (Braso) applied with a soft cloth will remove the patina and restore the brass to its original shine.

## For all other Living finishes:

An occasional application of a pure, nonabrasive wax (paste wax) is helpful in preventing spotting buildup, and light buffing with a soft cloth will produce a high luster. Do not allow materials such as toothpaste, nail polish remover, caustic cleaners or any type of adhesive tape to remain on the surface. Over time, with constant cleaning, the surface of your product may begin to show wear. The wear will take the form of faint lines in the highly polished surface.

For best results, it is recommended to follow the proper cleaning routine every 6 months depending on the frequency of use.

Some images below of tarnished finishes:



---

# Plated Finishes & PVD Coating Care & Maintenance

Polished Chrome (PC)

Polished Nickel (PN)

Satin Black Chrome (SBC)

Satin Chrome (SC)

Satin Nickel (SN)

Vapour Black (VBK)

Weathered Bronze PVD (VWB)

Black Satin PVD (VBS)

Brushed Brass PVD (VBB)

Gunmetal PVD (VGM)



Designer Doorware's special finishes are fabricated and coloured by hand; variations in size, shape, and colour are a natural result of this process.

Tooling marks and surface scratches are part of the character of the finished pieces.

To maintain the superior finish of these Plated Designer Doorware products, please ensure that only a damp cloth is used with diluted, mild detergent to remove any stains or fingerprints.

Residue build-up may cause discolouration of the original finish. To avoid such damage, please wipe products with a damp cloth, and dry thoroughly. It is recommended that this be done regularly, and incorporated into a general cleaning routine.

Do not use harsh solvents, abrasive cleaners, scourers or any type of adhesive tape on any plated or PVD Designer Doorware products as this may affect the thickness of the protective coatings.

PVD offers a high level of hardness durability on wear resistance, however it is not indestructible and therefore normal wear and tear such as gloss reduction, scratching, staining of the finish over time due to use, cleaning practices or atmospheric conditions can occur.

NB: Do not use methylated spirits on any Living Finishes as it may strip away any wax or protective coating.



---

# Powder Coated Finishes Care & Maintenance

---

## All Powder Coated Colours

---

Powder-coated colour finishes may chip with rough handling and therefore caution should be taken during installation, use and maintenance. To maintain the superior finish of these Powder Coated Designer Doorware products, please ensure that only a damp cloth is used with diluted, mild detergent to remove any stains or fingerprints.

Residue build-up may cause discolouration of the original finish. To avoid such damage, please wipe products with a damp cloth, and dry thoroughly. It is recommended that this be done regularly, and incorporated into a general cleaning routine.

Do not use harsh solvents, abrasive cleaners or scourers on any Powder Coated Designer Doorware products as this may affect the thickness of the coating over time.

We recommend a light clean with use of an automotive polish to remove scratches by working in small sections gently.



---

# Timber Oil and Grain Care & Maintenance

.....  
American White Oak Raw (Oak-Raw)  
.....

American Black Walnut Raw (Nut-Raw)  
.....

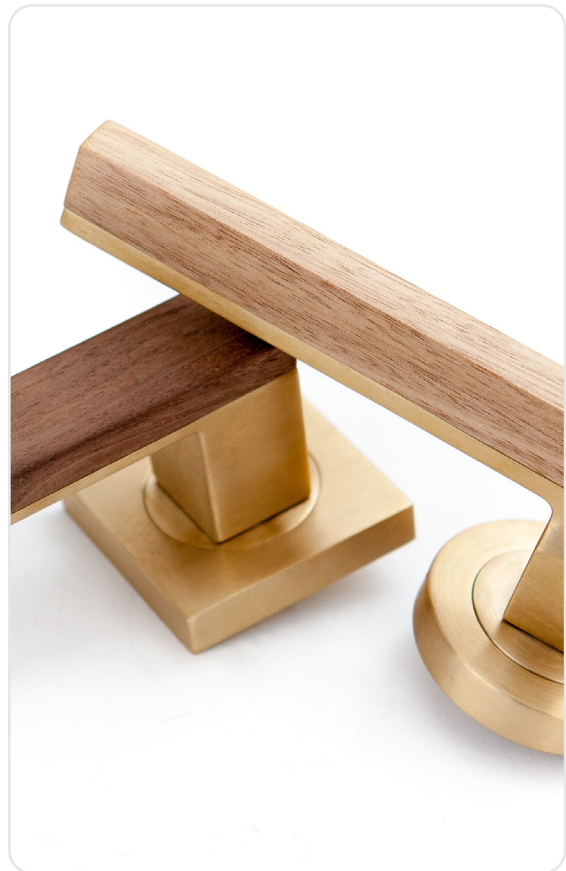
American White Oak Oiled (Oak-Oil)  
.....

American Black Walnut Oiled (Nut-Oil)  
.....

Designer Doorware timber products are fabricated and oiled by hand; variations and small splinters or dark and light tones are part of the natural timber. Tool marks and surface scratches are part of the character of the finished products.

Most of our timber products are oiled using the best brands available in our market today. Scandinavian oil is applied by hand over the natural sanded timber which enhances and protects the grain of the timber; variations in shade and colour are a natural result of this process. Tooling marks and surface scratches are part of the character of the finished pieces.

The oil will fade over time and is not impervious to moisture or wear and tear. It is recommended that the product be re-oiled annually for interior doors and every 3 months for exterior or higher use areas.





---

# Monte Sugi Care & Maintenance Program

Monte Sugi, inspired by the traditional Japanese Shou Sugi Ban method, embodies the timeless beauty of charred timber while retaining its natural integrity. To ensure the longevity and aesthetic appeal of your Monte Sugi products, we recommend the following care and maintenance guidelines:

Monte Sugi undergoes a meticulous charring process, enhancing its durability and resilience. However, as with any natural material, proper care is essential to maintain its allure. The charred surface serves as a protective layer, shielding the timber from external elements. Conduct periodic inspections of your Monte Sugi products to detect any signs of wear, damage, or discoloration. Addressing issues promptly can prevent further deterioration and preserve the timber's integrity.

Use a soft, dry cloth to gently remove dust and debris from the surface of the Monte Sugi timber. Avoid abrasive cleaners or harsh chemicals, as they may compromise the charred finish.

While Monte Sugi is resilient, prolonged exposure to moisture can affect its appearance and structural integrity. Ensure proper ventilation and avoid placing items directly on the timber surface to prevent moisture build-up.

Applying a specialized protective coating designed for charred timber can enhance the longevity of Monte Sugi products. We use a Scandinavian outdoor oil applied by hand which will complement the unique characteristics of Monte Sugi.

Develop a regular maintenance schedule to preserve the beauty of your Monte Sugi products. Depending on environmental factors and usage, consider reapplying protective oil every 5 years or as needed to maintain optimal condition.

In the event of significant damage or deterioration, sand timber until scratch is removed. Burn timber using blowtorch, rub with abrasive pad to even out the finish and fill timber grain. Repeat this step one more time for best results. Oil timber while still warm and allow to dry. Once dry, apply the 2nd coat of oil and rub off excess oil. Allow 24 hours to dry.

By following these care and maintenance guidelines, you can ensure that your Monte Sugi products retain their exquisite appearance and enduring quality for years to come. Embrace the artistry of Shou Sugi Ban and cherish the timeless elegance of Monte Sugi in your living space.



---

# Bullet + Stone Care & Maintenance

---

## Luna Grey Concrete (LGR)

---

Designer Doorware's special finishes are fabricated and coloured by hand; variations in size, shape, and colour are a natural result of this process. Tooling marks and surface scratches are part of the character of the finished pieces.

The Bullet+Stone Collection uses artisanal, hand-crafted concrete components, and a variety of metal finishes, to highlight the beautiful contrast between raw and sumptuous contemporary materials. This document provides information to help you preserve the premium quality of your Bullet+Stone concrete components.

### The Nature of Concrete

Concrete is not a homogeneous, uniform material & just like natural wood or stone, the finished concrete's appearance will always have aesthetic variations of shade, colour, pattern and overall size.

### Cleaning

To maintain the concrete products, the use of warm soapy water and a clean cloth can be used to remove any stains or fingerprints. Should this not be enough to remove a stubborn spill or mark, we recommend the use of a light abrasive chemical compound such as Ajax or Windex as acceptable. Harsh abrasives or cleaning chemicals could wear down the sealer and should be avoided where possible.

### Spills & Staining

Just like granite & marble, concrete is a porous substance and is susceptible to marking and staining. The sealer works to fill these pores and will protect against spills & stains, however we recommend acting swiftly (within a few hours) to clean up any spills that may penetrate the concrete. This can be done using one of the methods listed in the 'cleaning' section.

If you are concerned about a stain or mark that cannot be removed with the mentioned processes, please call our product experts to discuss your options here.

The product can be resealed on-site if and when required.

### Cracking, Chipping & Scratching

Although concrete is a very durable product, most corners are vulnerable to hard impacts from blunt objects however, with typical use the concrete is very durable and should not generally have any issues with cracking or chipping. The final sealed concrete product is still susceptible to scratching & abrasions and should be cared for as you would any other household product.

We advise that chopping and dragging sharp objects across our concrete products should be avoided. Should the sealer be damaged throughout its lifetime, it can be treated & re-applied on site with minimal fuss.

### Warranty

Concrete components of our Bullet+Stone comes with a two (2) year manufacturer's warranty valid for any material or workmanship defects.

### How many concrete Finishes are available?

One standard finish is available at present which we call Luna Grey. Custom finishes are also available upon request.

### Do I need to re-seal the product?

In retail or commercial settings where the product will see repeated use, re-sealing will be recommended every 5-10 years, however for residential settings re-sealing every 10+ years. Please contact us for more information.

### Isn't concrete heavy?

The concrete material that we use is approximately 4x lighter than brass.



---

# Stainless Steel Care & Maintenance

---

Polished Stainless Steel (PSS)

---

Satin Stainless Steel (SSS)

---

Designer Doorware's special finishes are fabricated and coloured by hand; variations in size, shape, and colour are a natural result of this process. Tooling marks and surface scratches are part of the character of the finished pieces.

There are many advantages with stainless steel, however it is steel, and steel will rust. Regardless of grade, cleaning is paramount, especially in coastal areas. The attractive and hygienic surface appearance of stainless steel products cannot be regarded as completely maintenance free. All grades and finishes of stainless steel may in fact satin, discolour or attain an adhering layer of grime in normal service.

To achieve maximum corrosion resistance, the surface of the stainless steel must be kept clean. Frequency and cost of cleaning stainless steel is lower than for many other materials. Surface contamination and the formation of deposits are critical factors which may lead to drastically reduced life. These contaminants may be minute particles of iron or rust from other non-stainless steel items nearby. Industrial, commercial and even domestic applications as well as naturally occurring atmospheric conditions can result in deposits which can be quite corrosive. An example is salt deposits in marine conditions.

Clean the stainless steel when it is dirty in order to restore it to its original appearance. This may vary from once to numerous times a year for external application or it may be once a day for an item in hygienic or aggressive situations. Stainless steel is quite easy to clean. Washing with soap or mild detergent and warm water followed by a clean water rinse is usually quite adequate for domestic and architectural conditions.

There are many cleaning products from which to choose. Depending on the type of cleaning and level of contamination, some products are better than others. Although some products are called "stainless steel cleaners," they may scratch the surface and may contain bleach which will dull, tarnish or discolour the metal if not completely removed. We recommend Eagle One Never Dull (available from Designer Doorware). Any rubbing should follow satin lines of the steel and always ensure thorough rinsing after cleaning.







**Melbourne Head Office & Showroom**

7 Kimpton Way,  
Altona Victoria Australia 3018  
T: +613 9300 8888

**Melbourne Showroom**

431 Church Street  
Richmond Victoria Australia 3121  
T: 03 9300 8887

**Sydney Showroom**

Shop 2, 35 Buckingham St,  
Surry Hills NSW Australia 2010  
T: 03 9300 8880

**QLD, SA, WA**

0411 410 498

Our products are available nationally  
please call us for your nearest distributor.



Exclusive North American distributor for Designer Doorware

Exclusive North American  
distributor for Designer Doorware  
ForteBrands.com  
T: 1.844.992.8371

**London**

sales@designerdoorware

designerdoorware.com  
sales@designerdoorware.com

