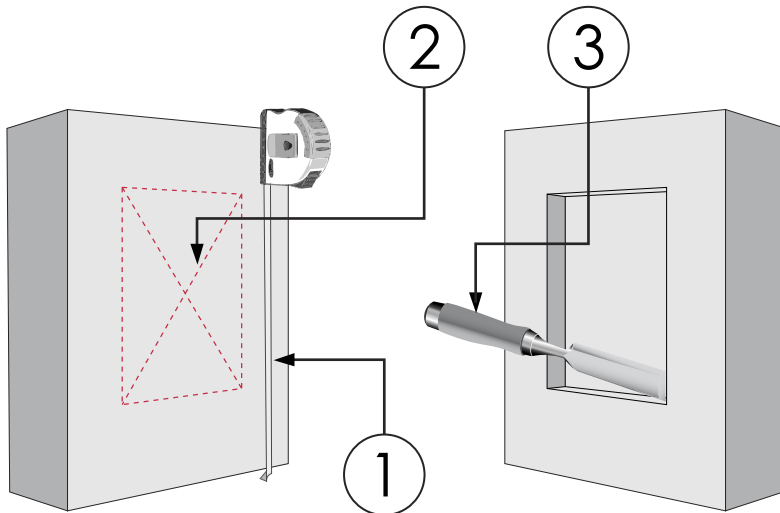


# Flush Pull Installation Guide

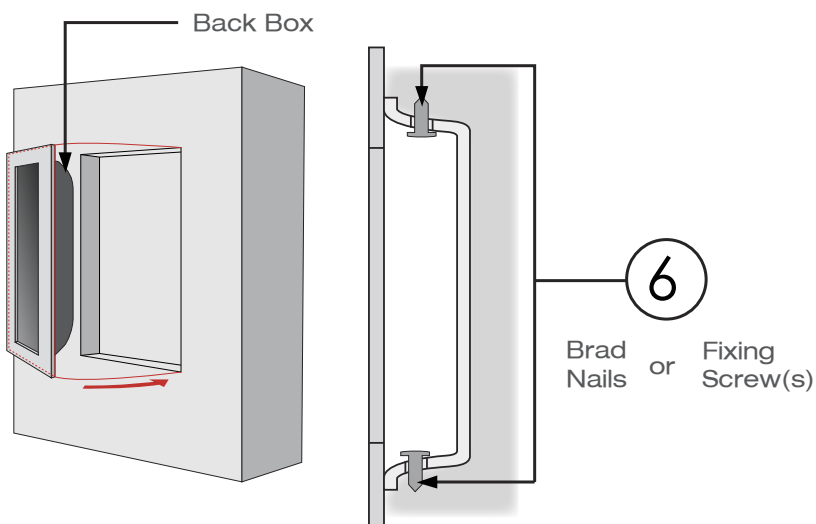
## Setup



## Preparing Surface For Installation

1. Measure the desired height and centre position that the flush pull will sit at from a fixed point (door edge, door frame, etc.)
2. Mark the required cutout length (L) and width (W) from the flush pull back box. Use a spirit level to ensure the cutout shape is level.
3. Use a chisel or preferred method to evenly remove material to the correct depth (D) as shown in the table below. If installing flush pulls back-to-back, you may choose to cut a hole right through the door.

## Installation



## Installing The Product

4. Ensure the alignment of the back box matches the shape and size of the cut out made. Adjust if needed.
5. Apply the necessary amount of adhesive as required by the surface condition to the cut surface of the door and press flush pull into cavity. Silicone based adhesive is recommended.
6. If required, use the included brad nails or fixing screw(s) to secure the top and bottom of the back box into the the cavity.
7. For flush pulls with one fixing point, put fixing point on top.

## Contact Us

t + 61 3 9300 8888  
f + 61 3 9310 1866  
sales@designerdoorware.com.au  
designerdoorware.com.au

7 Kimpton Way, Altona, Victoria, Australia  
3018

### Showroom

431 Church St, Richmond, Victoria, Australia  
3121